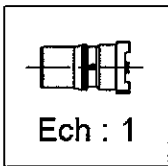
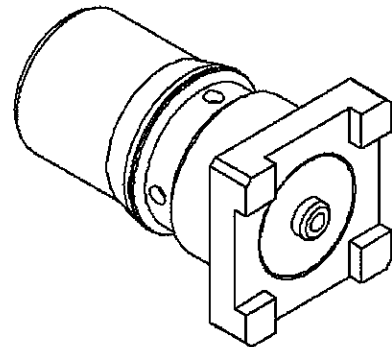
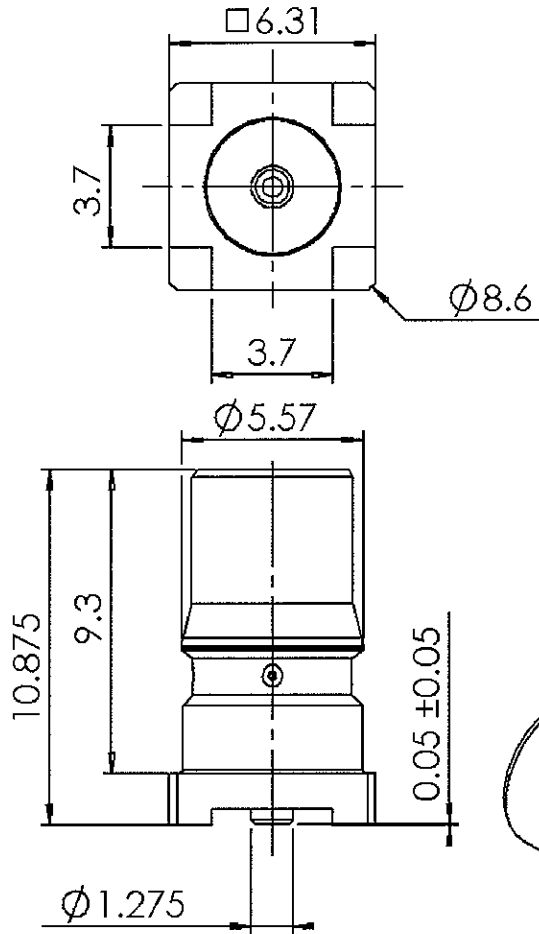


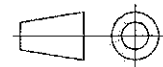
SMT RECEPTACLE
REEL PACKAGING PER 300

R123.427.823

Series : QMA



All dimensions are in mm.



COMPONENTS	MATERIALS	PLATINGS (µm)
BODY	BRASS	NPGR
CENTER CONTACT	BERYLLIUM COPPER	NPGR
OUTER CONTACT		
INSULATOR	PTFE	
GASKET		
OTHERS PARTS		
-	-	-
-	-	-

Issue : 0544 D

In the effort to improve our products, we reserve the right to make changes judged to be necessary.



SMT RECEPTACLE
REEL PACKAGING PER 300

R123.427.823

Series : QMA

PACKAGING

SPECIFICATION

Standard	Unit	Other
300	-	Contact us

ELECTRICAL CHARACTERISTICS

ENVIRONMENTAL

Impedance **50** Ω
 Frequency **0-6** GHz
 VSWR **1.04 + 0.045** x F(GHz) Maxi
 Insertion loss **0.05** √F(GHz) dB Maxi
 RF leakage - (*****80** - F(GHz)) dB Maxi
 Voltage rating **500** Veff Maxi
 Dielectric withstanding voltage **1000** Veff mini
 Insulation resistance **5000** MΩ mini

Operating temperature **-40/+80** °C
 Hermetic seal **NA** Atm.cm³/s
 Panel leakage **NA**

OTHERS CHARACTERISTICS

Assembly instruction

Others :

**Intermod.: -120dBc at 1.8GHz(2 x 20W)
 RF leakage: Interf. only: 3<F<6GHz:>70dB

MECHANICAL CHARACTERISTICS

Center contact retention
 Axial force – Mating end **27** N mini
 Axial force – Opposite end **27** N mini
 Torque **2.8** N.cm mini

Recommended torque
 Mating **NA** N.cm
 Panel nut **NA** N.cm

Mating life **100** Cycles mini
 Weight **1.218** g

Issue : 0544 D

In the effort to improve our products, we reserve the right to make changes judged to be necessary.



RADIALL®

SMT RECEPTACLE
REEL PACKAGING PER 300

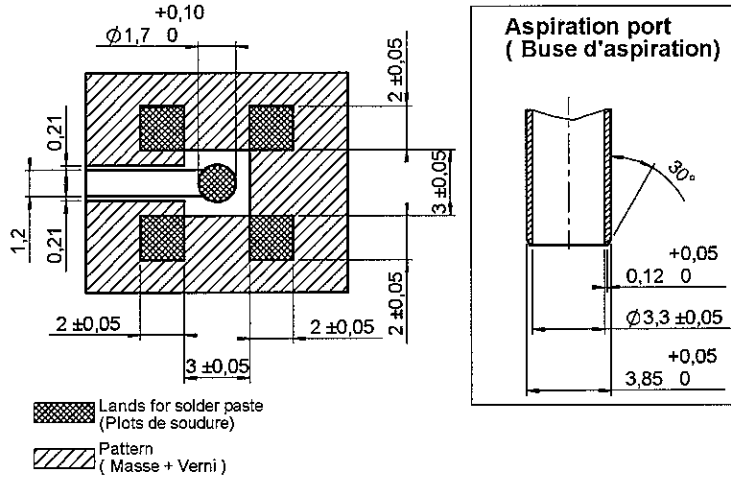
R123.427.823

Series : QMA

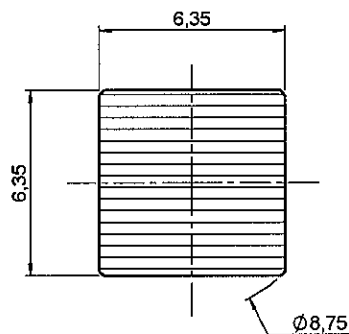
QMA SERIE - INFORMATIONS

COPLANAR LINE : Pattern and signal are on the same side. Thickness of PCB = 0.063 (1.6mm).

The material of PCB is the epoxy resin of glass fabrics bacs (Er = 4.8). The solder resist should be printed except for the land pattern on the PCB.



SHADOW OF QMA RECEPTACLE FOR VIDEO CAMERA



Issue : 0544 D

In the effort to improve our products, we reserve the right to make changes judged to be necessary.



SMT RECEPTACLE
REEL PACKAGING PER 300

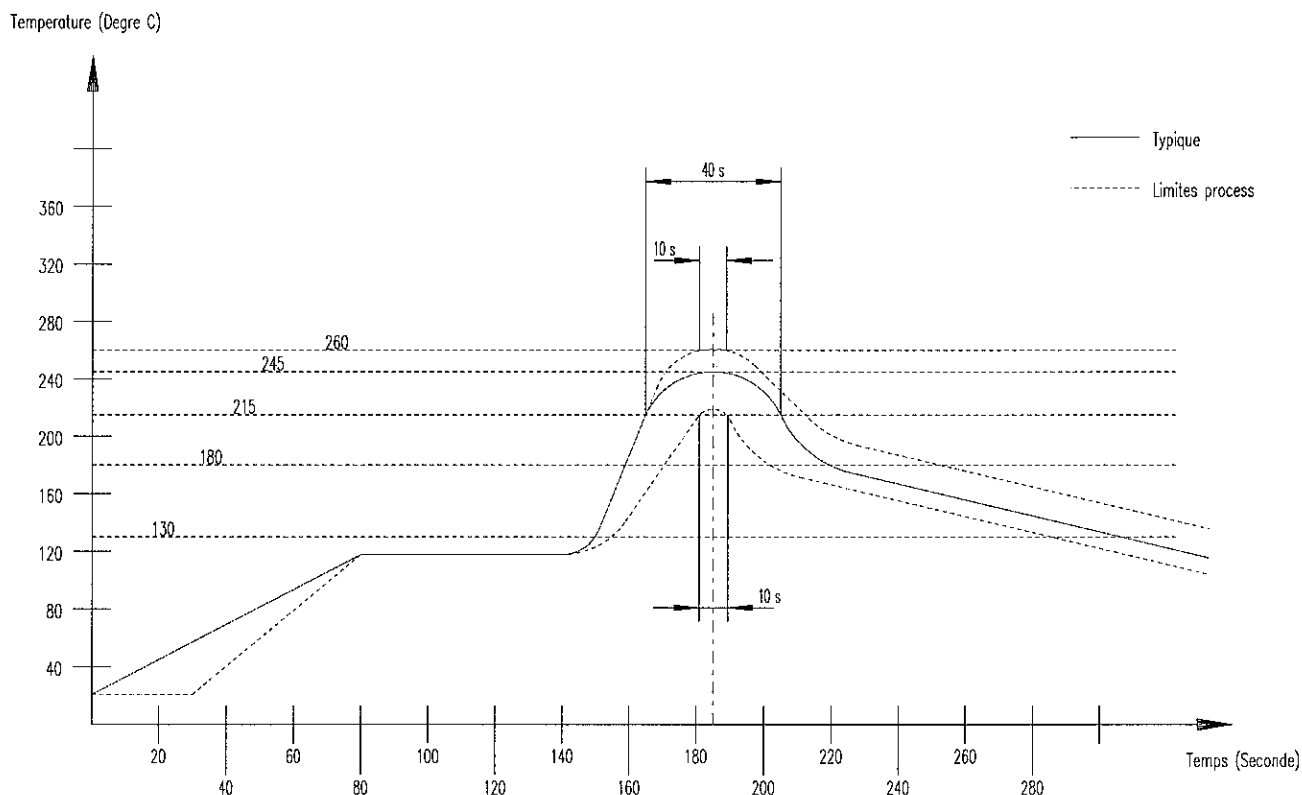
R123.427.823

Series : QMA

SOLDER PROCEDURE

1. Deposit solder paste 'SN62RP11AGS90' on mounting zone by screen printing application. We recommend a low residue flux.
 We advise a thickness of 150 micromm (5.850 microinch). Verify that the edges of the zone are clean.
2. Placement of the receptacle on the mounting zone with an automatic 'pick and place' machine.
 Video camera is preferred to check the positioning of the component (See page 3).
 Adhesive agents are forbidden on the receptacle.
3. Soldering by infra-red reflow.
 We give under, the typical profile to use.
4. Cleaning of the printed circuits board.
5. Checking of solder joints and position of the components by visual inspection.

TEMPERATURE PROFIL



Issue : 0544 D

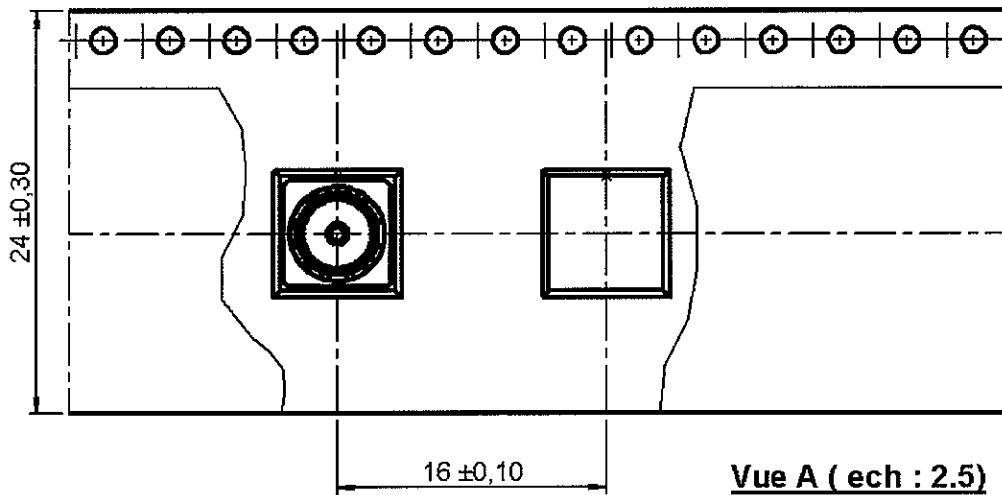
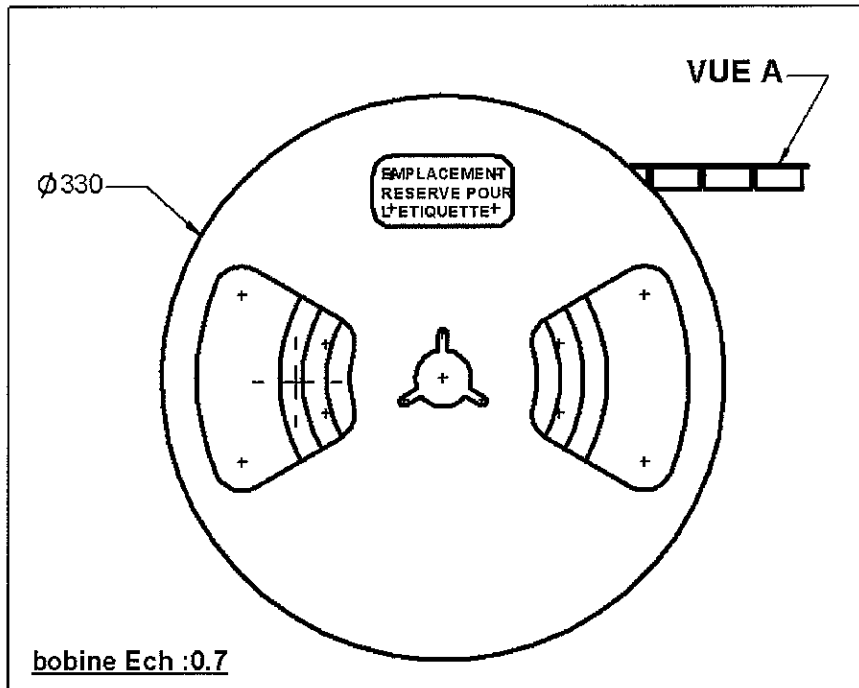
In the effort to improve our products, we reserve the right to make changes judged to be necessary.



SMT RECEPTACLE
REEL PACKAGING PER 300

R123.427.823

Series : QMA



Issue : 0544 D

In the effort to improve our products, we reserve the right to make changes judged to be necessary.

